



247ink Technical Information

Reset Instructions for Canon CLI-8 Series Cartridges

Step 1: Carefully remove the chip from an OEM ink cartridge (picture 1), then stick the double sided tape (provided) onto the the back (picture 2).

Place the chip onto the replacement compatible ink cartridge (picture 3). Make sure there is no surplus tape which could affect the contact between the chip and printer carriage. Install cartridge in printer according to manufacturers instructions.



Picture 1



Picture 2



Picture 3



Picture 4



Picture 5



Picture 6

Step 2: A dialog box will pop up, if the dialog box is the same as shown (picture 5), continue printing until the dialog box shown in picture 6 appears.

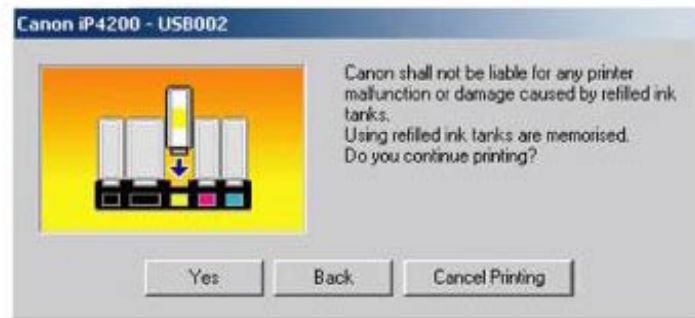
Press the 'Yes' button to continue. If you are faced with the re-appearance of the dialog in picture 5, repeat **Step 2** until you see the dialog box in picture 7. Now proceed to Step 3.

Step 3: Click 'Yes' in the dialog box below (picture 7).



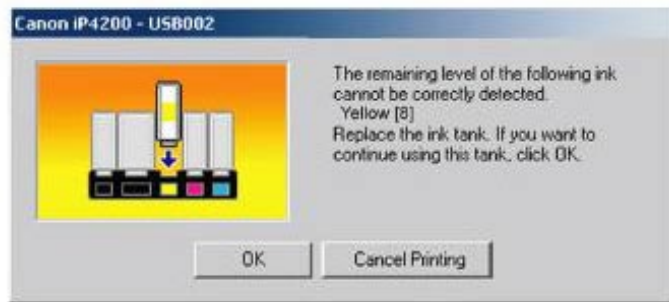
Picture 7

Step 4: Click 'Yes' in the dialog box below (picture 8).



Picture 8

Step 5: Click 'OK' in the dialog box below (picture 9).

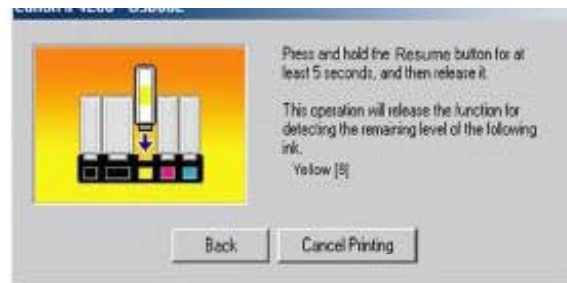


Picture 9

Step 6: IMPORTANT - Do not click 'Back' or 'Cancel Printing' (picture 10). Press and hold the paper feed button for 5 seconds (picture 11) and then release the button. Another dialog box will appear (picture 12), you are now finished and can continue printing.

If the dialog box in picture 10 reappears, repeat this step.

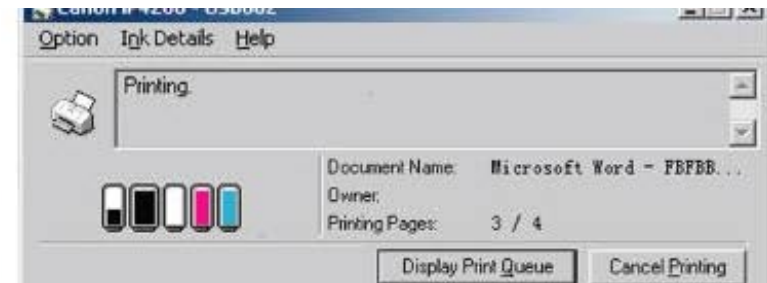
* For Canon MP series, press and hold the 'Stop' button until the alarm light stops blinking.



Picture 10



Picture 11



Picture 12